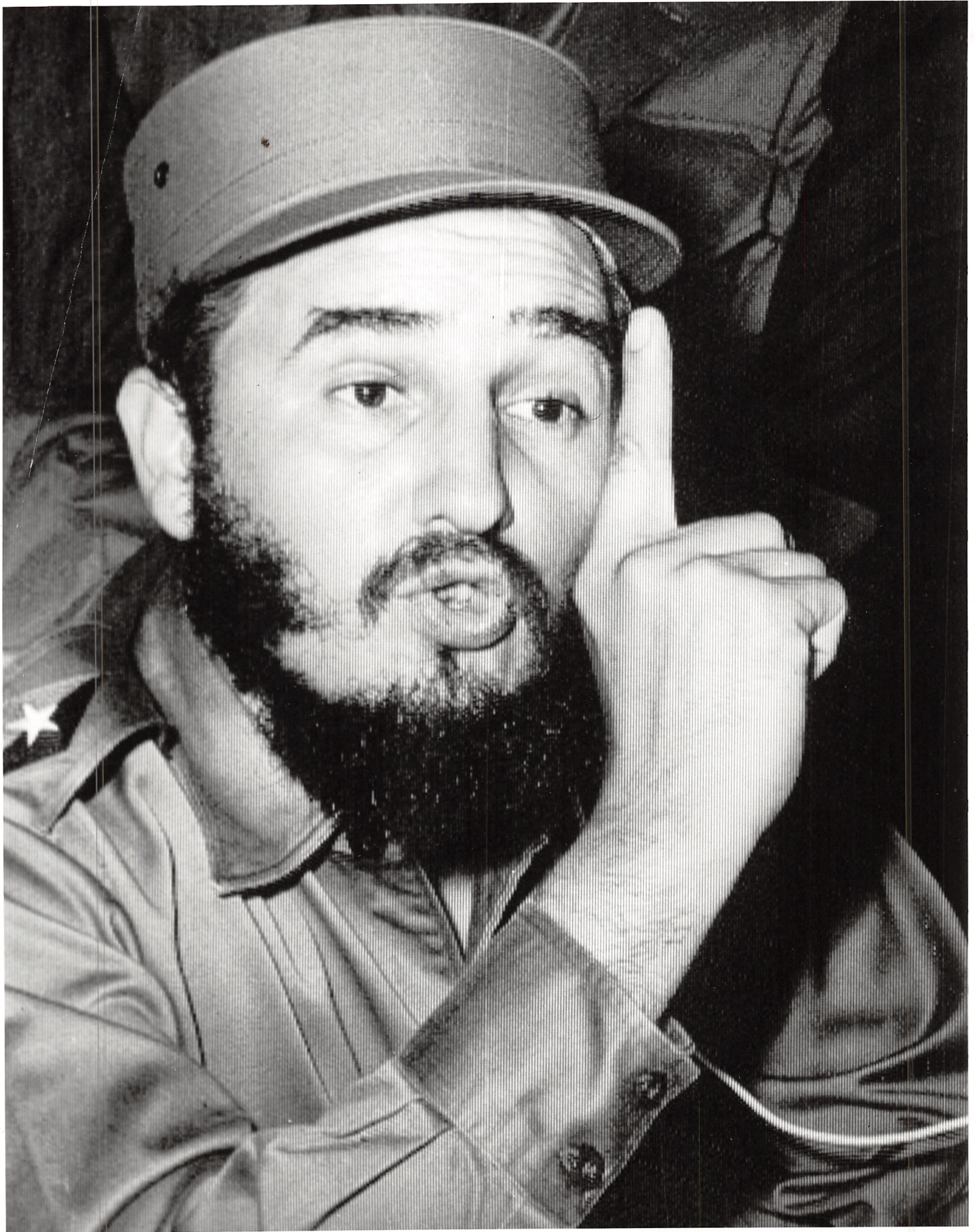




Les chutes Shawinigan (Cha-B-nigan) en Mauricie









7/2

89

PHOTO
ARMOUR LANDRY
3000 EST, RUE SHERBROOKE
MONTREAL (4e) CANADA

Page 14

29/2



48 2

4/13

PHOTO
ARMOUR LANDRY
3000 EST, RUE SHERBROOKE
MONTREAL (4e) CANADA

2/1
Rouge

108

PHOTO
ARMOUR LANDRY
3000 EST, RUE SHERBROOKE
MONTREAL (4e) CANADA

5/9

comme avant

Chutes près d'Inverness (Québec)



Chutes-à-Blondeau sur la rivière Outaouais, près du lieu où Dollard fut massacré
avec ses compagnons.

264

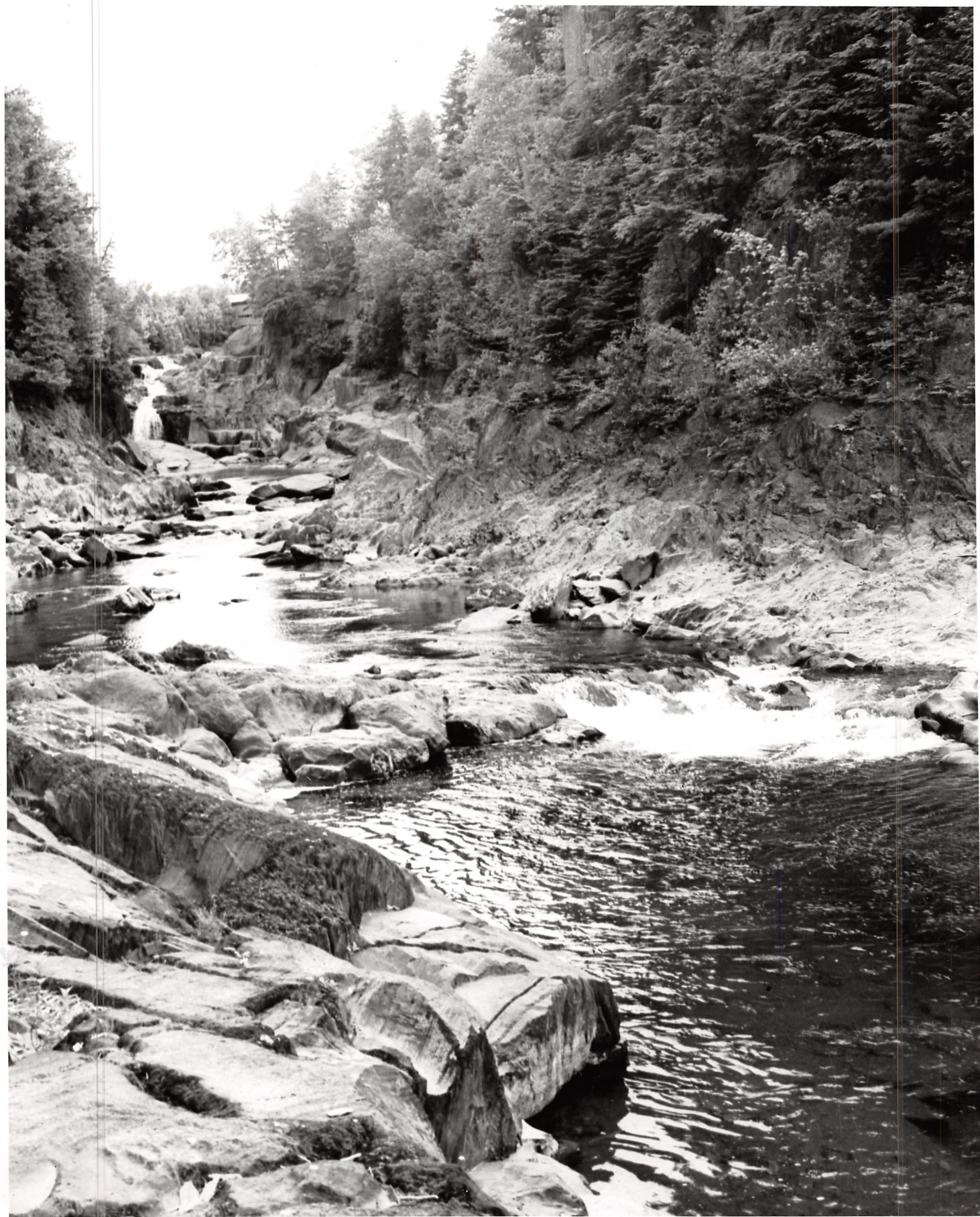
PHOTO
ARMOUR LANDRY
3000 EST, RUE SHERBROOKE
MONTREAL (4e) CANADA

(58)

Page 38

3/13

35/10



Rivière descendant en cascade près de Saint-Jean-de-Brébeuf en Estrie

Page 6

PHOTO
ARMOUR LANDRY
3000 EST, RUE SHERBROOKE
MONTREAL (4e) CANADA

89

5/5/8

125%

4/3

609



NEW YORK STATE DEPARTMENT OF COMMERCE PHOTO

23,715

One of New York State's spectacular natural wonders is the 600-foot-deep Genesee Gorge in Letchworth State Park, fifty miles southwest of Rochester. Foaming 107-foot-high Middle Falls dominates the landscape as the Genesee River makes its way through the 17-mile canyon.

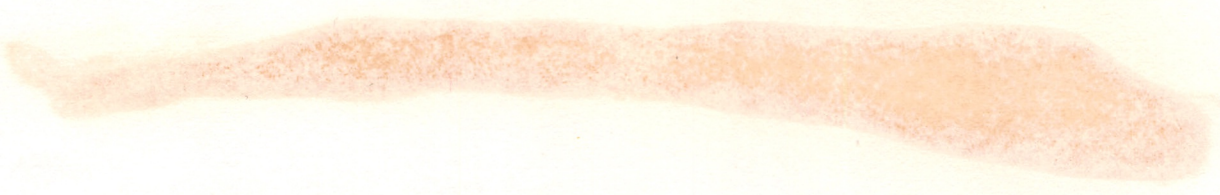
Bryce Hutchinson Hill

Photo by HA

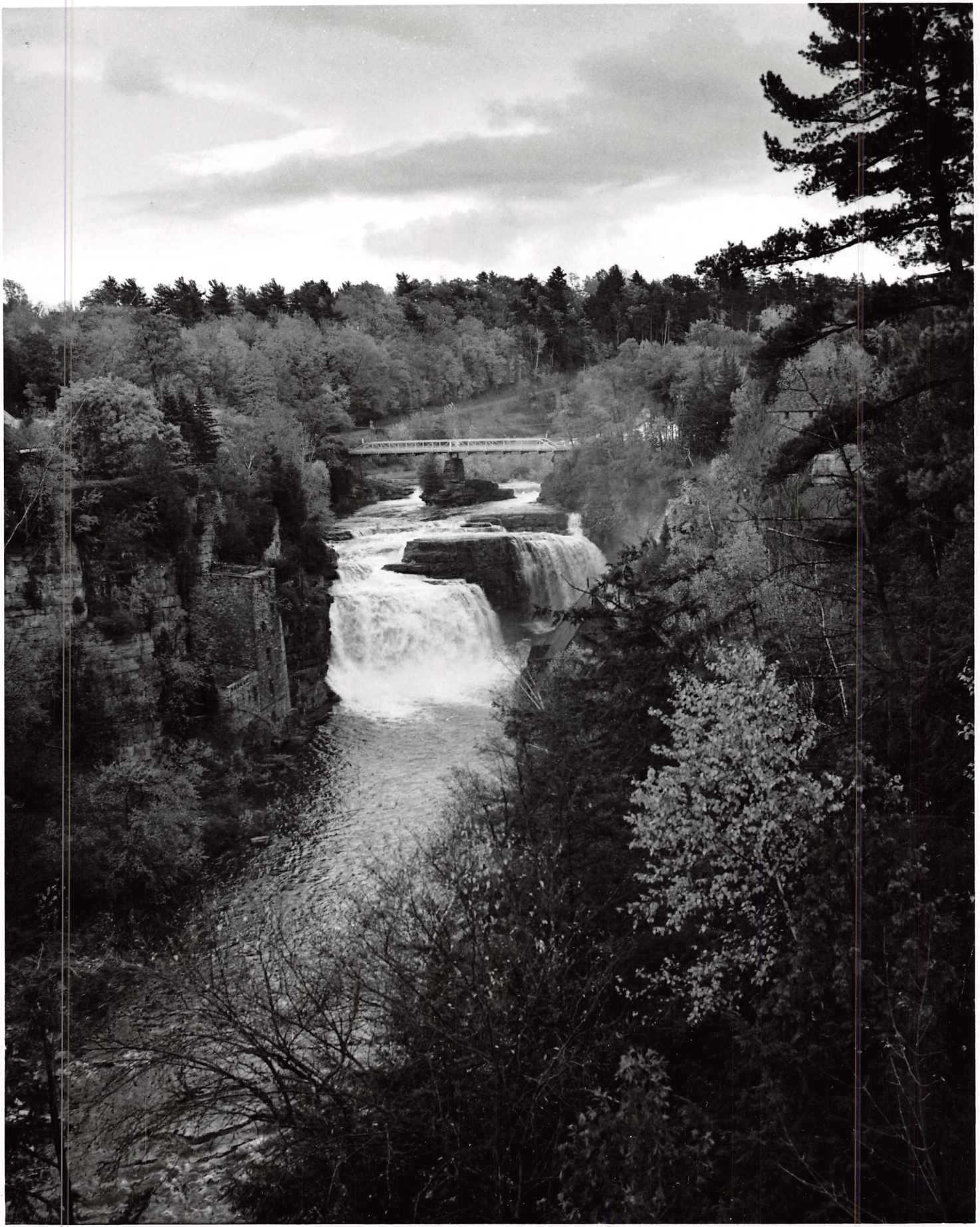
NEW YORK STATE
DEPARTMENT OF COMMERCE

PHOTO FOR EDITORIAL USE ONLY. NOT
FOR RELEASE OR LOAN. USE FOR ADVERTISING
PROHIBITED WITHOUT PERMISSION.

Released for news purposes only



NEW YORK STATE DEPARTMENT OF COMMERCE PHOTO
One of New York State's spectacular natural canyons is the
600-foot-deep Genesee Gorge in Lewiston State Park, 1937.
This photograph of Rochester, featuring its 100-foot-high bridge
like dominates the landscape as the Genesee River makes its
way through the 11-mile canyon.



NEW YORK STATE DEPARTMENT OF COMMERCE PHOTO 24,963

The Ausable River carves its way through the Adirondacks providing spectacular scenery all along its route. The West Branch of the Ausable is also an excellent trout fishing stream.

Ashtabula River

Photo by DONALD DCREMUS

Suppl no 90

NEW YORK STATE
DEPARTMENT OF COMMERCE

PHOTO FOR EDITORIAL USE ONLY. NOT
FOR RELEASE OR LOAN. USE FOR ADVERTISING
PROHIBITED WITHOUT PERMISSION.
Released for news purposes only

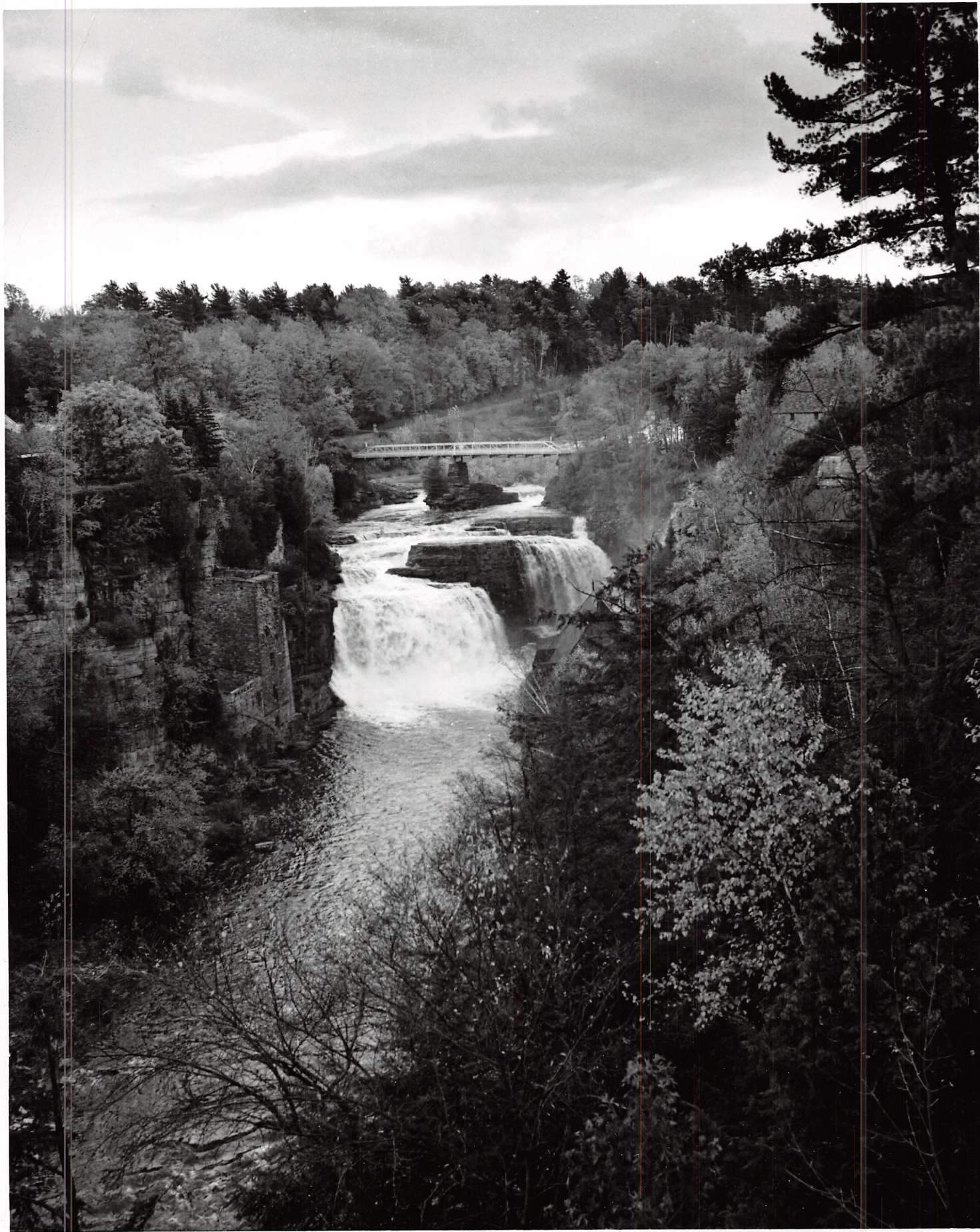
THE STATE DEPARTMENT OF COMMERCE HAS BEEN ADVISED THAT

THE ABOVE PHOTO IS BEING USED IN THE NEWS BY THE

NEW YORK STATE DEPARTMENT OF COMMERCE HAS BEEN ADVISED THAT

THE ABOVE PHOTO IS BEING USED IN THE NEWS BY THE

NEW YORK STATE DEPARTMENT OF COMMERCE HAS BEEN ADVISED THAT



NEW YORK STATE DEPARTMENT OF COMMERCE PHOTO 24,963

The Ausable River carves its way through the Adirondacks providing spectacular scenery all along its route. The West Branch of the Ausable is also an excellent trout fishing stream.

Charles Brown

Photo by DONALD DOREMUS

24013

NEW YORK STATE
DEPARTMENT OF COMMERCE

PHOTO FOR EDITORIAL USE ONLY. NOT
FOR RELEASE OR LOAN. USE FOR ADVERTISING
PROHIBITED WITHOUT PERMISSION

Released for news purposes only



THE NEW YORK STATE DEPARTMENT OF COMMERCE HAS

THE HONORABLE CHARLES BROWN HAS BEEN APPOINTED

COMMISSIONER OF THE STATE DEPARTMENT OF COMMERCE

AND WILL TAKE POSSESSION OF HIS OFFICE

THIS MORNING